

SCHOBER – TECHNOLOGY OFFERS YOU PROGRESS

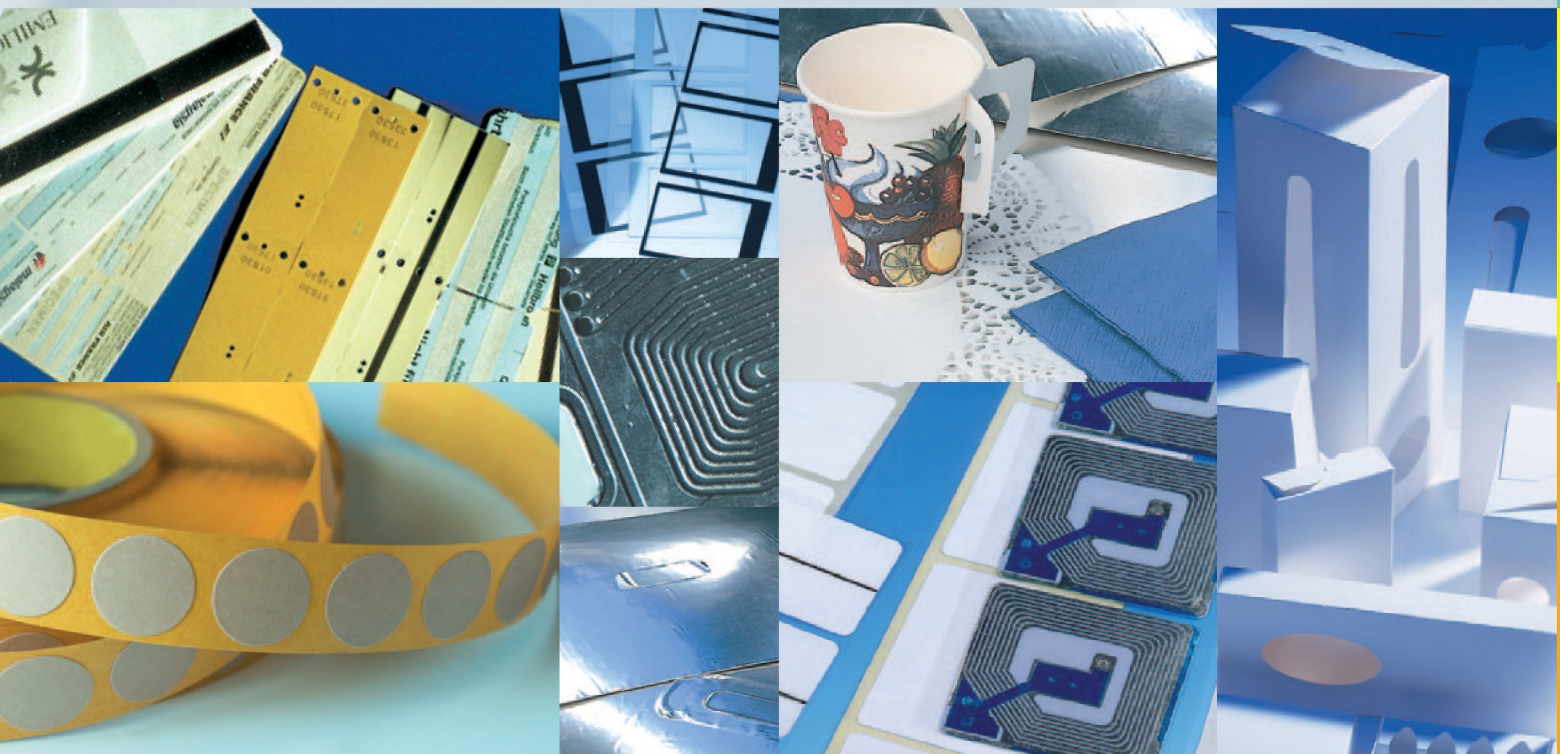


WITH US AS
YOUR COMPETENT
PARTNER
YOU CAN PICK UP
THE PACE!

DO YOU KNOW HOW MANY
DIFFERENT PRODUCTS
CAN BE PRODUCED
USING MACHINES, MODULES
OR TOOLS FROM SCHOBER?



SEE FOR YOURSELF →



← WHAT WE CAN DO!

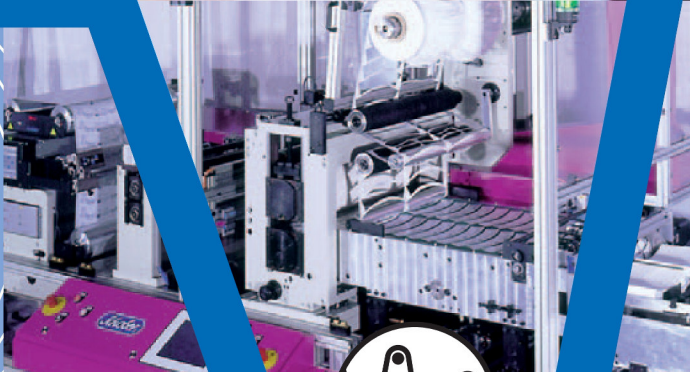
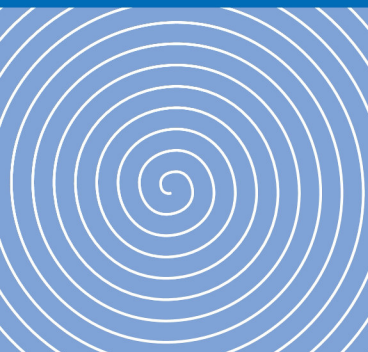
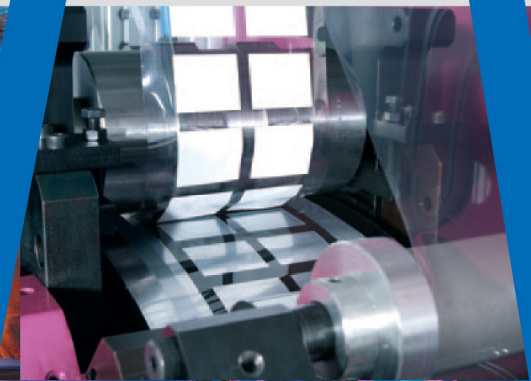
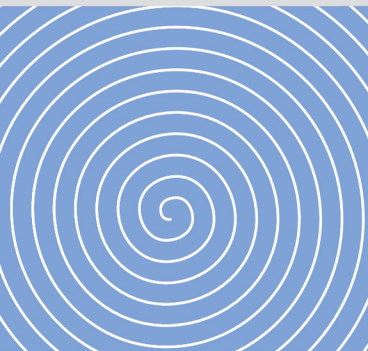
Roll-Material

Unwinding of paper board, paper, self-adhesive film, film, foil with web width up to 1500 mm and roll diameters up to 1800 mm.

Laser Technology

compared to all other cutting technologies on the market is the only technology where the tool that cuts the pattern is not subject to physical wear, in other words a custom design cutting tool is not required.

The cut/perforation contour is software controlled and the coordinates are calculated accurately to eliminate distortion (on the fly).



Process Development

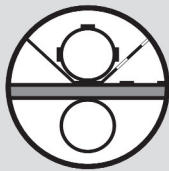
Comprehensive Know-How, continuous development and process analysis ensure that customer specific "Total Solutions" for the production of high-quality products can be offered. Utmost precision and flexibility is achieved through precise electronically synchronized digital servo drives.



Ultrasonic Welding

is especially suitable for the pre-welding of composite or non-woven materials. This technology drastically reduces the energy consumption and eliminates the application of hot glue.

Additional advantages are the user friendliness, reduced machine down-time, immediate system readiness and increased equipment availability.



Sealing/Embossing

Amongst other things, this technology is used for the application of magnetic tape onto electronically readable tickets, however it is also used to embellish packaging with foil and holograms to protect against counterfeiting and product piracy.



Punching

The punching technology has been developed and refined through Schober's long standing experience in the printing, packaging, hygiene and medical field spanning over several decades. Based on the material, punching applications with web width of up to 2000 mm and speeds of up to 600 m/min can be performed clean and burr-free. Waste removal is achieved without any problems even for tight punching patterns with hole-sizes as small as 0.9 mm.

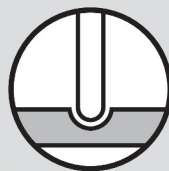


Cut & Place

"Cut and Place" is the transfer and placement of pre-cut materials or products onto a continuously moving web in fixed or variable distances within registration. This technology already finds application for the production of top-quality products for the telecommunication, automobile and pharmaceutical industry.

Gluing/Bonding

Proven technology for the application of cold and hot glue with application rollers or touch-less with the use of applicator-heads or jet-matrix controlled by a programmable microprocessor.

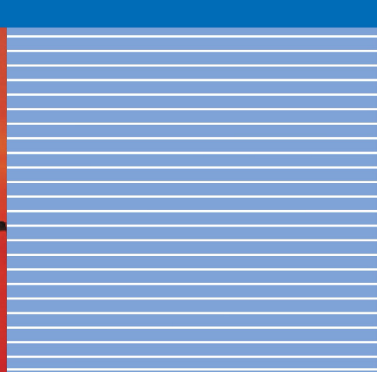
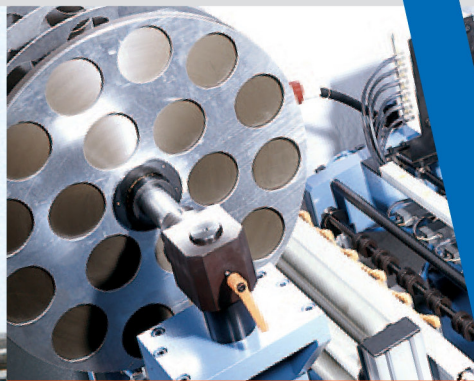
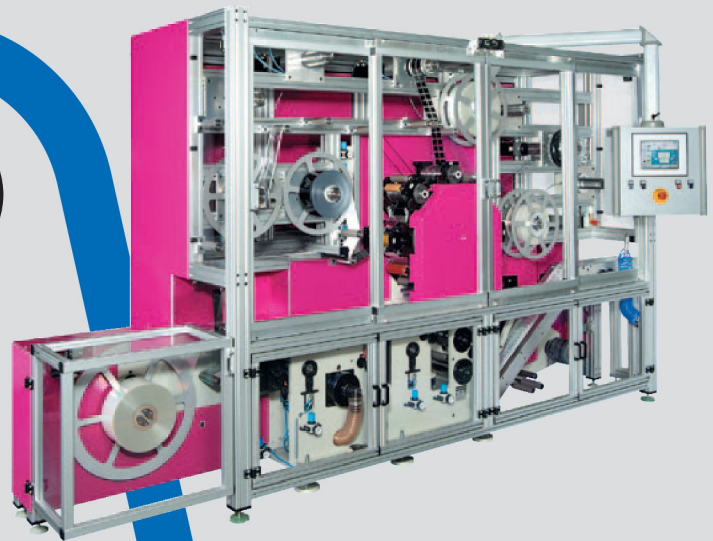


Scoring/Grooving

Rotary scoring/grooving tools, in a positive/negative design, for the application of product specific grooved profiles and contours in materials such as paper board, filters, non-wovens and fuel cells.

Cutting

Rotary cutting technologies are employed for the form cutting of materials, laminates, non-wovens and films as thin as 10μ . Using state of the art CNC-technique almost any imaginable cutting contour can be achieved.



Collating

This technology is the process of assembling roll material (paper, self-adhesive material, film and tape) as well as pre-folded printed web-material in registration.

Product Delivery

is product specific and depends on the subsequent processing of the products. Several options are available: rewound with or without splice, shingle delivery, alternatively with a fully automated stacking device or folded.

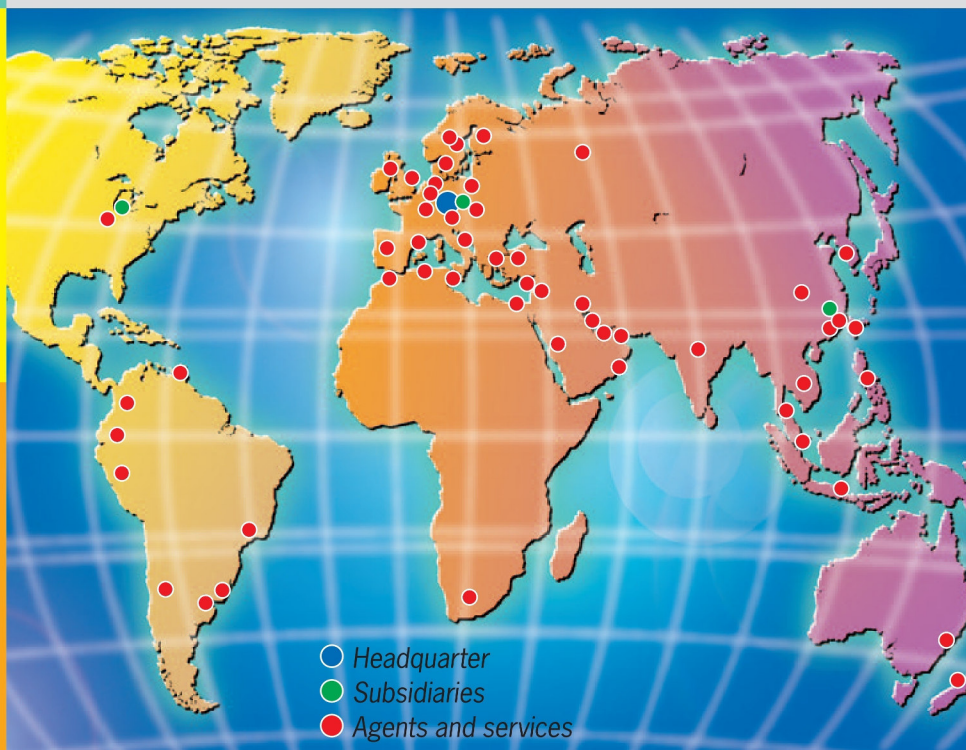
BASIS FOR EXCELLENT PARTNERSHIP



Whether your application calls for rotary tooling or a module for in-line process solutions or your focus is more directed to production results than unusual material combinations –

Contact Us! because we offer our complete service to you. Profit from our competent consultation service available worldwide!

Take advantage of our engineering with its wealth of experience in a wide array of applications. Count on quality and reliability because Schober employs a DIN EN ISO 9001 certified quality-management system. Put your trust in our professional customer service and our tooling and spare parts inventory offering unsurpassed availability. With its state of the art technology Schober will elevate you to a successful market position.



- Engineering
- Quality Products
- Know-how
- Reliability
- Worldwide Customer Service

**PUT YOUR TRUST
INTO SCHOBER'S
CONSULTING SERVICE.**
We will gladly put you in touch with our representative in your geographical region.

SCHOBER WORLDWIDE – PRESENCE THAT GUARANTEES SERVICE!

Schober USA, Inc.

4690 Industry Drive Fairfield, Ohio 45014

Tel: 513/489-7393 Fax: 513/489-7485

email: solutions@schoberusa.com

www.schoberusa.com